

# Operating Procedures

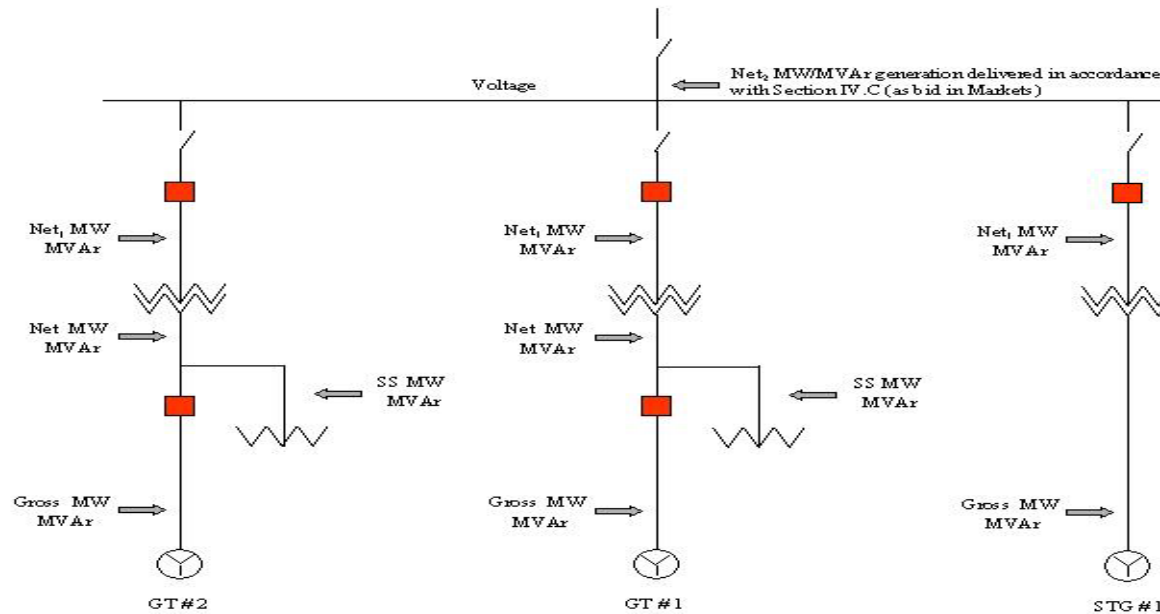
ISO New England Operating Procedure No. 18

*Metering and Telemetering Criteria – Appendix D –  
OP 18 Metering and Telemetering Diagram*

Effective Date: February 1, 2005  
Revision No. 4

## Appendix D -

### OP 18 Metering and Telemetry Diagram



**Definition of generator telemetry terms:**

- Gross MW/MVAR:** MW and MVAR (real and reactive power) as measured from the generator terminals.
- SS MW/MVAR:** MW and MVAR (real and reactive power) as measured from the high voltage winding of the station service/auxiliary transformer.
- Net MW/MVAR:** Generator net MW and MVAR as measured from the low voltage side of the GSU or can be calculated by the generator as Gross minus Station Service (Net = Gross - SS).
- Net<sub>1</sub> MW/MVAR:** Generator net MW and MVAR as measured from the high voltage side of the GSU for use in the energy markets and for AGC for those units bid in as an individual asset.
- Net<sub>2</sub> MW/MVAR:** Total sum (sum of Net<sub>1</sub>) of generator net MW and MVAR (e.g. for a combined cycle plant GT1+GT2+STG1) as measured from the high voltage side of the GSU used in the Markets and in accordance with Section IV.C of this procedure.

**OP 18 APPENDIX D REVISION HISTORY**

**Document History** (This Document History documents action taken on the equivalent NEPOOL Procedure prior to the RTO Operations Date as well revisions made to the ISO New England Procedure subsequent to the RTO Operations Date.)

<b>Rev. No.</b>	<b>Date</b>	<b>Reason</b>
Rev 0	04/13/99	
Rev 1	10/21/99	
Rev 2	06/21/2002	
Rev 3	10/01/04	
Rev 4	02/01/05	Updated to conform to RTO terminology