

WAL-MART AND DEMAND RESPONSE



The Beginning

- Initial contact
- Set up meetings with legal team and UI
- Costs
- Risks



Demand Response Goals

- Help reduce overall peak and demand loads
- Increase available energy supply
- Help to reduce greenhouse gas emissions
- Help reduce the need for fossil burning generation plants.
- Help create a more reliable power grid
- Allow for aggregation
- No minimum participation limits





- Check the load on each store individually.
 - HVAC
 - Lighting
 - Refrigeration
- Determine which loads are curtailable.

SYSTEM: 1980 CTef, PUTNAM
EP2: 1 HVAC/LIGHTS

LOAD DIRECTORY

++++>> ALARM ON UNIT 1 2 <<++++ 65+

1	RG1	ACCT/OFFICE	17	RG17	BRKRM NOS	33
2	RG2	VESTIBULE	18	RG18	OFF/COMPUTR	34
3	RG3	PHARMACY W/P	19	RG19	TRAINING	35
4	RG4	1ST RIGHT	20	RG20	LAY 1/2AC	36
5	RG5	McD'S KTCN	21	RG21	STOCKROOM/L	37
6	RG6	McD'S SEAT	22	RG22	STOCKROOM/R	38
7	RG7	CHECKOUTS/L	23	RG23	CORRIDOR	39
8	RG8	CHECKOUTS/C	24			40
9	RG9	CHECKOUTS/R	25	RG25	ENTRANCE	41
10	RG10	2ND RIGHT/C	26			42
11	RG11	GARDEN CNTR	27			43
12	RG12	3RD LEFT	28			44
13	RG13	3RD RIGHT	29			45
14	RG14	4TH LEFT	30			46
15	RG15	4TH LEFT/C	31			47
16	RG16	4TH RIGHT	32			48

' :' for load types ' * ' for module addresses Tab 1 of 3

+++++

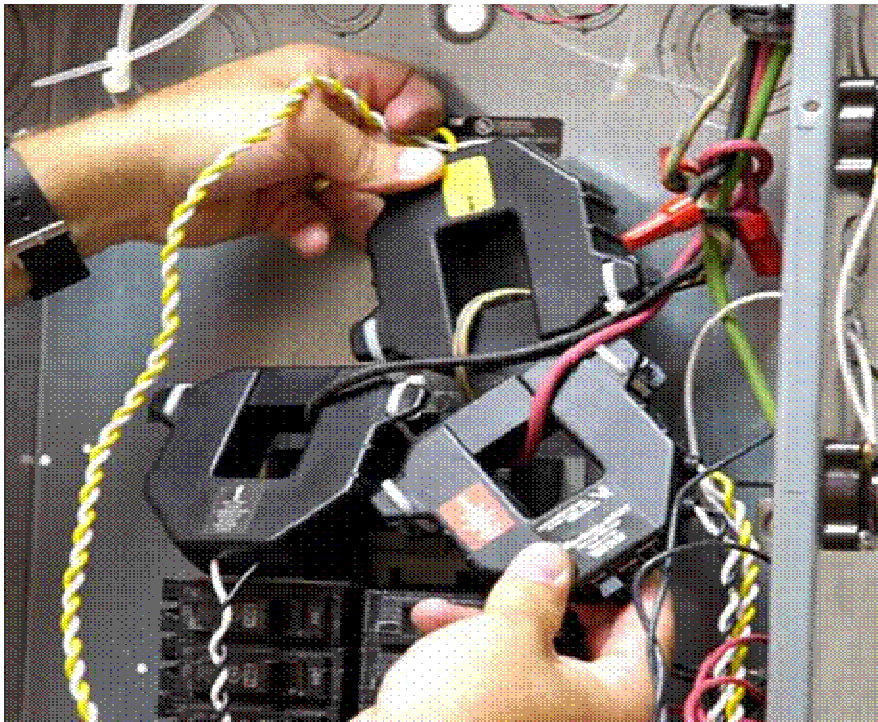
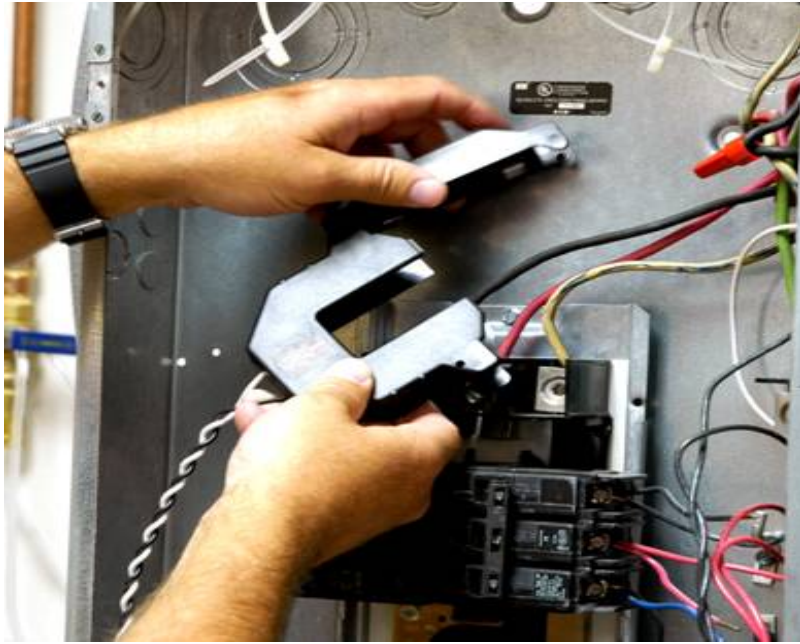
Select existing load to display:



- Check the load on each store individually.
 - HVAC
 - Lighting
 - Refrigeration
- Determine which loads are curtailable.
- Check factors that would affect course of action.
- Determine amount of curtailable load and bid capacity.

- Install metering equipment.







- Install metering equipment.
- Set up groups of stores with metering partner for each DR program.
- Program curtailment parameters into EMS system.
- Connect meter to EMS system.

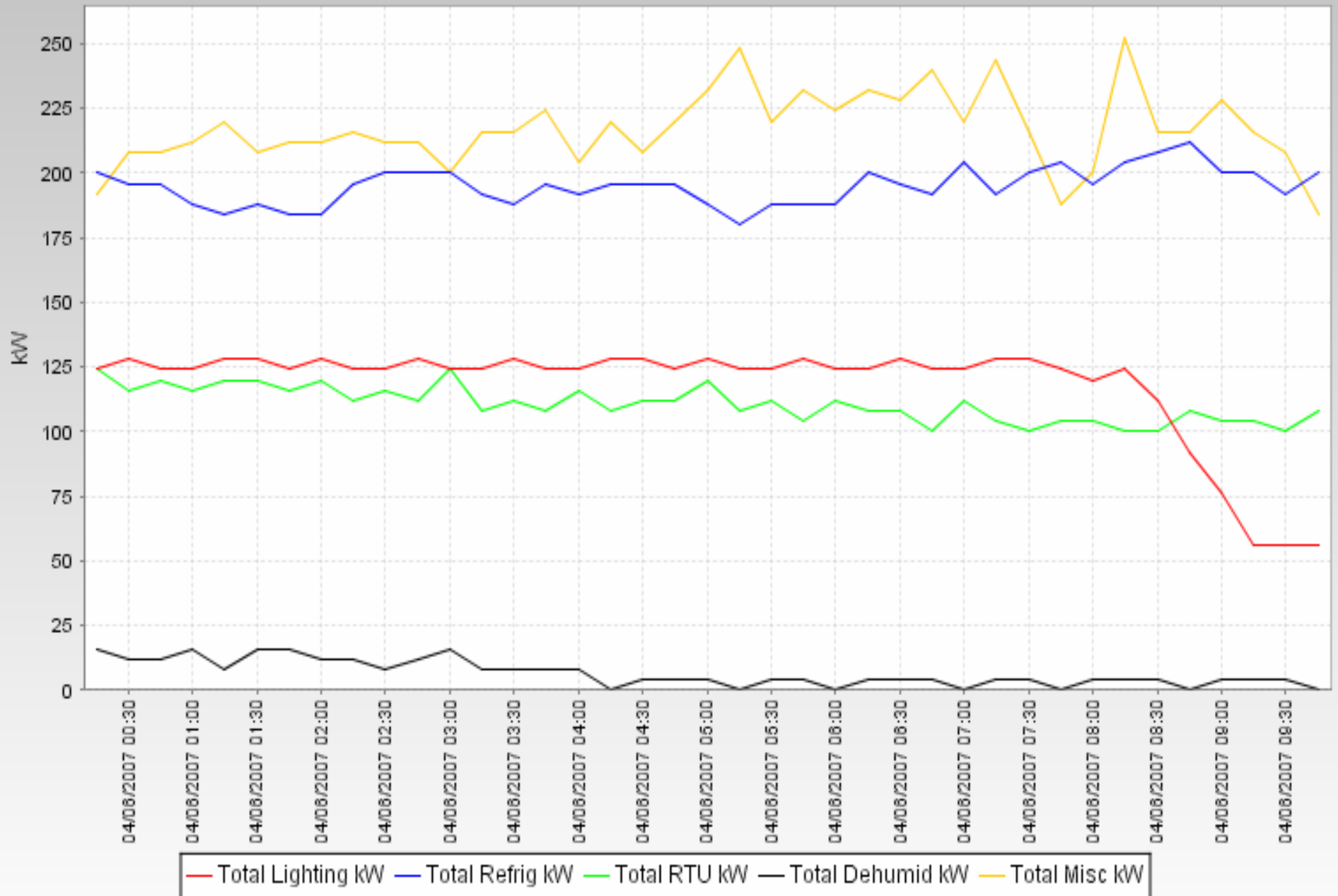


- Install metering equipment.
- Set up groups of stores with metering partner for each DR program.
- Program curtailment parameters into EMS system.
- Connect meter to EMS system
- Test all communication and performance.
- Track performance, make adjustments and learn for future events.

Site Summary: 15 Minute Data: kW Overlay

[04/06/2007 00:00 - 04/07/2007 00:00]

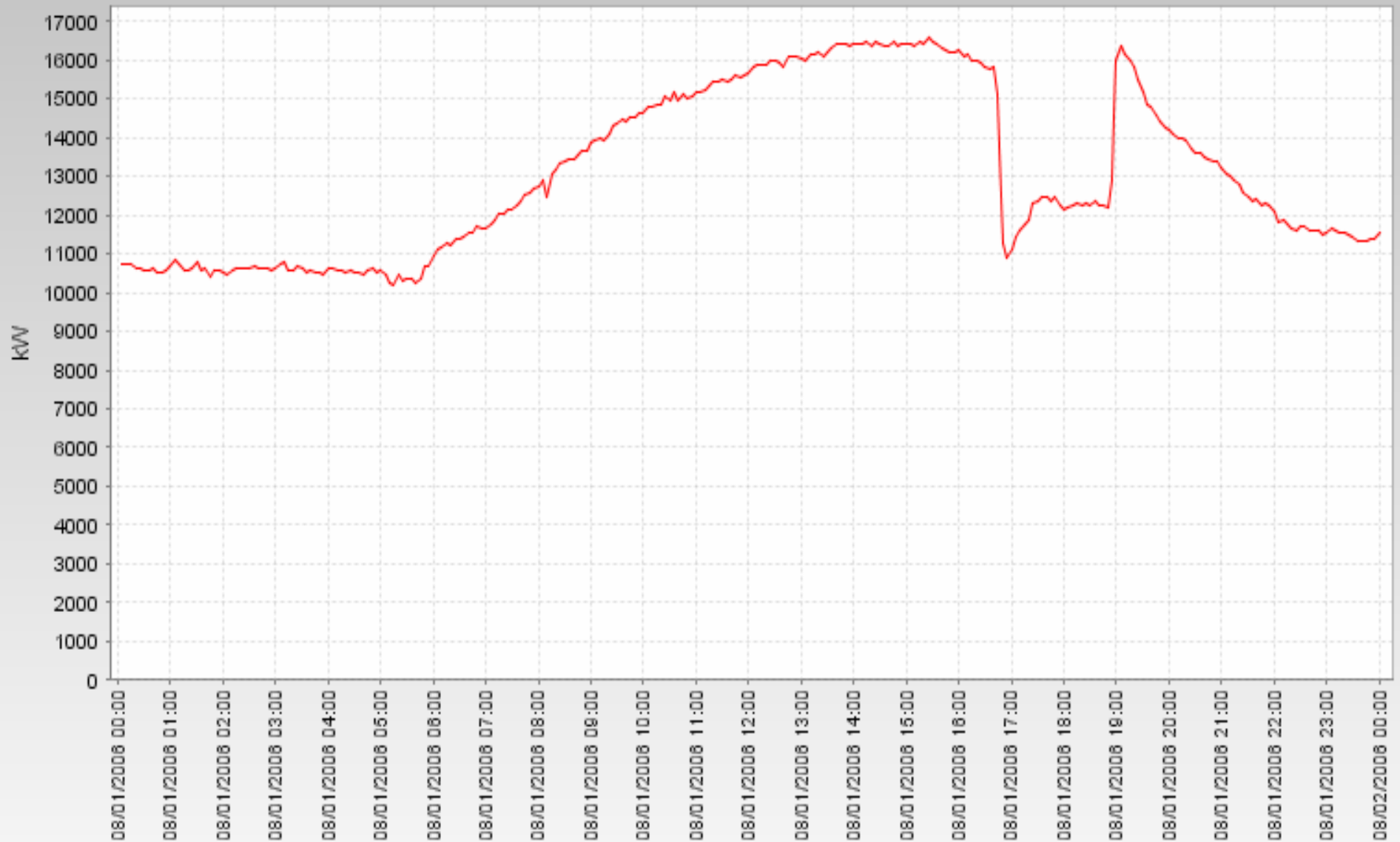
/STORES AND DC'S/TEXAS (ERCOT)0206 MCKINNEY, TX



TOTAL CONNECTICUT LOAD: 5 Minute Data: KW

[08/01/2006 00:00 - 08/02/2006 00:00]

/STORES AND DC'S/DEMAND RESPONSE STORES/CONNECTICUT



15 minute interval

— kW

Demand Response

- Promote customer choice with metering.
- The cost of advanced metering should be lowered by removing unreasonable regulation and promoting competition and innovation.
- Customers should be allowed to install their own advanced meters provided they are in compliance with standards set by the regulatory authority.
- Customers should receive full bill credit for proactive installation of meters.
- Customers or their authorized representative should have full, frequent and easy access to their own meter data.



Advice and Recommendations

- Communicate constantly with your utility
- Customers should be allowed to retain benefits of demand response programs and investment in equipment
- Energy payments+ Capacity payments
- Business economics are affected
- Renewable Energy Credits
- White Tags

